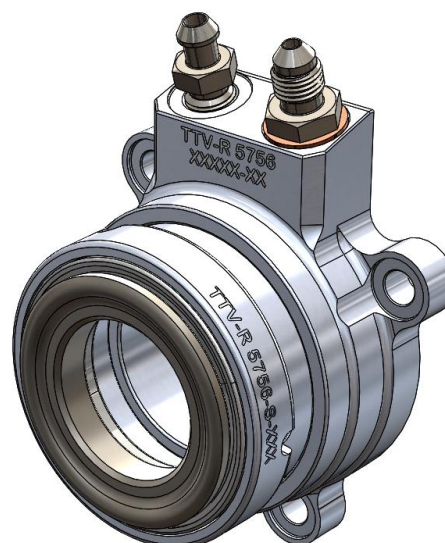
	Slave Cylinder Specifications	Doc Number: 5756-01-501	Revision: D
	Title: 5756 Series – SAAB 9000 Type Concentric Slave Cylinder	Author: SRV	Effective Date: 21/04/2023

- Compact and standard setup heights
- Large bearing option to accommodate up to Ø35mm input shafts
- Rounded and flat thrust face bearing noses
- Machined from billet aluminium
- Hard anodised with low friction coating
- Spacers with integral spigot available
- Gearbox adaptors available or made to order
- Interchangeable with other SAAB 9000 style concentric slave cylinders e.g. AP CP3859, CP6859, CP8084, Tilton 1XXX series and Alcon KSA series
- Piston area: 923.6mm² (1.4316in²)
- Maximum pressure: 8.6MPa (1250psi)
- Hydraulic ports: M10x1 – 12mm min full thread



Slave Cylinder Models

Part Number	Setup Height	Nominal Stroke	Min Height	Max Height ¹	Bore	Release Bearing Housing O.D. ²
5756-S15-XXX	49.7	15	43.4	57.2	32	61
5756-L15-XXX ³	57.2	15	50.9	64.7	36	74
5756-S18-XXX ³	54.2	18	46.4	63.2	32	61
5756-L18-XXX	61.7	18	53.9	70.7	36	74

1. Recommended to use a travel stop under clutch pedal.
2. Check release bearing housing does not foul clutch cover at full travel.
3. Large bearing option with 140mm race clutch requires 20mm bearing spacer. Enquire for details.

Thrust Face Options

Part Number Suffix "XXX"	Description
40R	Ø40mm Round Nose ⁴
46R	Ø46mm Round Nose ⁵
50R	Ø50mm Round Nose
59F	Ø44mm I.D / Ø59mm O.D. Flat Face

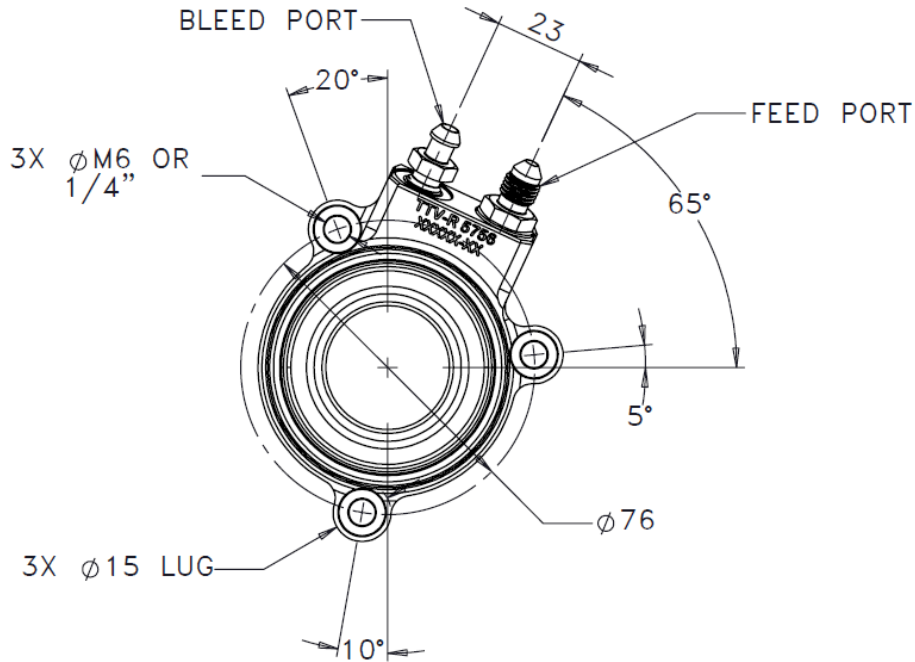
4. Typical 140mm (5.5") race clutches.
5. Typical 184mm (7.25") race clutches.

Our Supply of Goods Terms & Conditions can be found on our website under Info & Downloads.

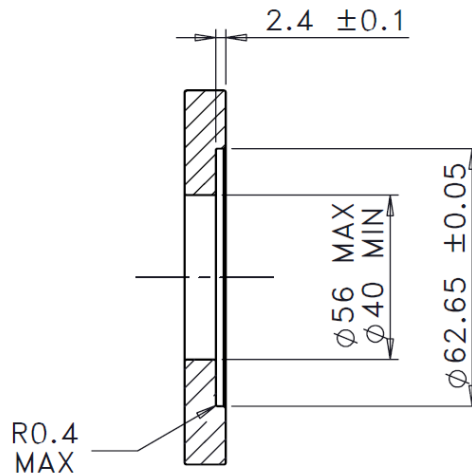
TTV Racing parts are designed for motorsport requirements only and have not been designed/ tested/ homologated for road use. Installation of these parts may void vehicle manufacturers warranty coverage and/ or may cause the vehicle to be illegal in some countries. Please check with local laws on the road use of your vehicle. TTV Racing reserves the right to make product improvements and changes without notice and without incurring liability with respect to similar products previously manufactured.

	<h1>Slave Cylinder Specifications</h1>	Doc Number: 5756-01-501	Revision: D
	Title: 5756 Series – SAAB 9000 Type Concentric Slave Cylinder	Author: SRV	Effective Date: 21/04/2023

Key Dimensions – All Dimensions In mm



Adapter Dimensions



TTV Racing can manufacture adaptor plates to suit your requirements, please contact us for a quote and to place an order.

Spares

Seal kits and thrust bearing assemblies are available for customers rebuilding slave cylinders. TTV Racing can also rebuild slave cylinders on your behalf. Please contact TTV Racing for details.

Our Supply of Goods Terms & Conditions can be found on our website under Info & Downloads. TTV Racing parts are designed for motorsport requirements only and have not been designed/ tested/ homologated for road use. Installation of these parts may void vehicle manufacturers warranty coverage and/ or may cause the vehicle to be illegal in some countries. Please check with local laws on the road use of your vehicle. TTV Racing reserves the right to make product improvements and changes without notice and without incurring liability with respect to similar products previously manufactured.